

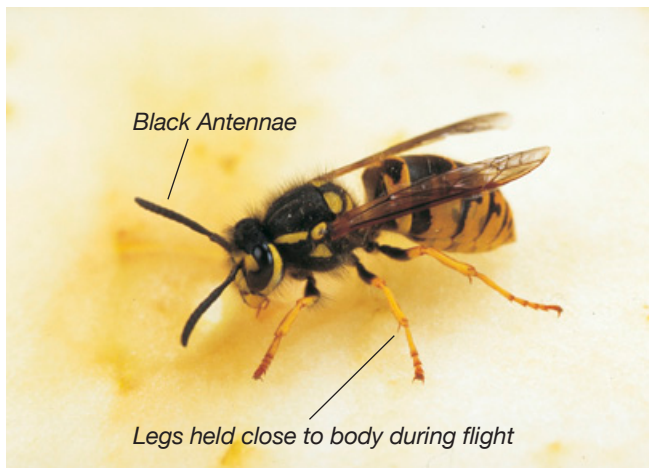


Gardennote

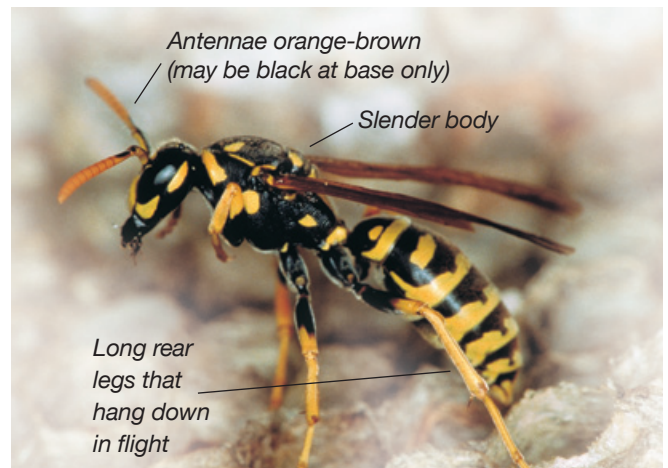
Wasp identification guide

By Peter Davis, Marc Widmer and Tara Craven, Entomology Branch.

European wasp



Paper wasp



Size Workers: About 15 mm long (size of a bee)
Queens: larger (not usually seen).

Body shape Stout: Like a bee.

Colour Bright yellow and black, no other colours.

Antennae (feelers) All black (see picture above).

Flying Legs held close to body during flight.
Fly very quickly, generally do not hover.

Longer than a bee: 15–19 mm long.

Longer and thinner than a bee. Narrow waist.

Yellow paper wasp: Bright yellow and black.
Common paper wasp: Brown with yellow and black stripes.

Orange or brown tips (see picture above).

Back legs dangle down during flight. Often seen hovering around bushes and over lawns.

Suspect European wasps should be reported to the Department of Agriculture and Food.
Freecall **1800 084 881** during normal office hours Monday–Friday 8.00am–5.00pm.

Important disclaimer

The Chief Executive Officer of the Department of Agriculture and Food and the State of Western Australia accept no liability whatsoever by reason of negligence or otherwise arising from the use or release of this information or any part of it.

For more information visit www.agric.wa.gov.au

European wasp nest



Nests	Rarely seen. Usually below ground.
Shape	Round or football shaped with an outer covering of insulating carton. Above with outer carton peeled back for display.
Size	Large: Growing in summer to be the size of a basketball or bigger.
Location	Normally in the ground but may be found in a roof or wall cavity. Will have a busy entrance hole with many wasps entering and exiting per minute.
Treatment	Treated and removed free of charge by the Department of Agriculture and Food. Wasps will sting repeatedly. It is hazardous to approach the nest; do not attempt to treat the nest yourself. Wasp attacks can occur en-masse.
Food	Wasps feeding from pet foods, scraps, meat, fish or dead insects on vehicle grilles are likely to be European wasp

Paper wasp nest



Nests	Often seen. Usually above ground.
Shape	Single flat layer of papery honeycomb cells. Grey-brown in colour, often with some white-capped cells.
Size	Golf ball to crumpet sized: Rarely can be as large as a dinner plate.
Location	Located under fence capping or roof tiles, also under eaves and in dense shrubs. Sometimes in hollow steel and piping.
Treatment	By the householder or pest control operator but nests need to be located. This can be done by following drinking wasps back from water. Wasps will sting and can sting repeatedly if you approach the nest during the day. Spray nests after sundown with fly spray. Remove and destroy nests the next day once all wasps are dead. Nests left untreated will produce more queens to start nests the following spring. All paper wasps are introduced into south Western Australia; they are not native.
Food	Caterpillars: rarely come to meats.